



Volume 32, Number 1, April 2019
www.wlmd.org

CHEMICAL TREATMENT PLANS - 2019

WLMD receives a permit annually from DNR to chemically treat weeds in Wind Lake. Most of the areas treated are shallow, weed-choked and restrict lake access for property owners. We will be treating when the conditions warrant, usually in early May, and early June, weather permitting. We will also be conducting treatments to try to control the Starry Stonewort (SSW).

The DNR permit for the chemical treatment is available on the WLMD website. Go to wlmd.org. The link to the permit is on the home page, and on the aquatic plant page.

If you DO NOT want your shoreline to be treated, please complete the form provided in this newsletter. Please return the form immediately.

When the treatment takes place, the adjacent shorelines of areas which are treated will be posted with bright yellow signs, indicating what herbicide has been used. The notice will also indicate if there are any recreational use restrictions following the treatment. The boat launch will also be posted with a treatment map. Because weather, including winds, affect the ability to conduct treatments, last-minute changes may occur. We will keep the wlmd.org website up to date as much as possible on when and where treatments are taking place.

The plants that are targeted for treatment include milfoil, curly-leaf, SSW and filamentous algae. Occasionally, native plants are treated, but only if they are blocking navigation areas. DNR has the final say in all the treatment areas for chemical control and may deny the treatment of specific areas.

Let us know if you have unusual weed problems. We will check it out and see if it is something that we can treat. Please call or email with questions or concerns.

ROADSIDE WEED PICKUP

We will continue the roadside weed pickup program this summer. **Lake weeds only** can be placed on the roadside for pickup. Please make sure the pile is close to the side of the road and not setting back up against a building or tree-line. We will not be picking up "ice-off" debris. Property owners are free to take ice-off debris to Waste Management (M, W, F: 8 to 4 pm; S: 7 to 3 pm).

Do not put lake sediment, dirt, rocks, branches, garbage or other debris in the piles or your piles will not be picked up.

Piles must be out by noon on Mondays and will be picked up between Monday afternoon and Wednesday evening.

The deadlines for putting LAKE WEEDS ONLY out for pick up are noon on:

Monday May 20

Monday June 24

Monday July 22

Monday August 26

Monday September 23

Monday October 21

Any changes to the schedule will be posted on the website, wlmd.org.

2019 Chemical treatment permit from DNR is now available online at WLMD.org (Click on Aquatic Plants) or by calling 262-514-3238.

HARVESTING

The District plans to conduct harvesting on the lake again in 2019. Harvesting is primarily used to open up navigational channels on the lake. It will also be used to collect large mats of floating plants on the open water. The Town has worked with us by allowing the cut weeds to be dumped at the old Transfer site. We updated our Plant Management Plan in 2017 so we are now working under the second year of a 5-year DNR permit to harvest.

GEESE

Wind Lake has taken part in a goose-removal program for a number of years to reduce the numbers of geese on Wind Lake. This program has been very effective at keeping the numbers of non-migratory geese on the lake manageable. If there are enough birds, we hope to conduct the goose roundup again in mid-June when the birds are molting.

The goal of the program is to keep the numbers of geese in line with what the lake can naturally support. Excessive numbers of non-migratory geese contribute to the water quality problems, including E-coli bacteria and increased phosphorus loadings.

IF YOU HAVE NOT SENT IN A FORM PREVIOUSLY AND WE CAN GO ONTO YOUR PROPERTY TO REMOVE GEESE, PLEASE SEND IN THE FORM INCLUDED IN THIS NEWSLETTER.

Your permission will continue through multiple years unless you rescind it. Please help us continue this very successful program.

FREE VESSEL SAFETY INSPECTION

WLMD is again partnering with The United States Power Squadron and the Coast Guard Auxiliary to conduct boat inspections. Advanced registration is suggested.

June 8 - 9:00 am - 3:00 pm

Free 15-point inspections will be conducted at the DNR Public Boat Launch or at in-water moorings.

Pre-register by calling 262-895-7991. Make sure your summer boating is a safe one!

BOAT LAUNCH IMPROVEMENTS

New concrete and a new pier are part of the latest improvements that have been done at the DNR launch. The site closed the first week in April to do the work. The pier should be in by Opening Day of fishing season.

STARRY STONEWORT INVASIVE UPDATE

In August 2017, a new invasive algae was found in Wind Lake: Starry Stonewort (SSW). First found in Wisconsin in Little Muskego Lake, it is now in Big Muskego, Long Lake, Lake Geneva, Silver Lake (Washington Cty), Green Lake, Little Cedar, Pike Lake, Sturgeon Bay, and Lake Michigan. It has also been found in a number of lakes in Minnesota. SSW is in over 200 lakes in Michigan and is in 10 lakes in Indiana.

SSW invaded Wind Lake differently than the other lakes. It was not found in the near-shore, shallow areas. It was found in the deeper zone, in the 4 to 8 foot depths. It was not found earlier because pre-infestation surveys looking for SSW focused on the near-shore areas.

After the discovery of SSW in Wind Lake, the District applied for grants to help fund control of the invasive. DNR funded one year, of a two-year grant application for a large-scale control project.

The project included two 50-acre treatments conducted over the summer in 2018, to try to prevent the SSW from moving into the shallow, very diverse areas of Wind Lake. SSW is a very aggressive invader.

DNR conducted aquatic plant surveys to assess the efficacy, and they monitored residual levels of the herbicide to determine how long the material remained present in the water column. Wind Lake volunteers assisted DNR by providing boats and drivers for the residual monitoring.

There are a number of challenges in dealing with new invasive species, among them:

- Depending on how quickly the invader has moved in, there may be very little in the way of documented methods for effective control.
- There may also be existing laws or requirements that limit what can be done, and how quickly.
- The cost of possible control methods may be prohibitive, especially over time.

Various control methods have been attempted at Long Lake, Little Muskego Lake and Big Muskego Lake. Little Muskego Lake tried suction harvesting and a 7-foot drawdown, both of which proved to be expensive and ineffective in controlling SSW. Big Muskego used chemical treatments to control SSW in navigation channels with some positive results. A variety of chemical treatments on Long Lake had mixed results.

We wanted to conduct control activities on Wind Lake immediately but the DNR's procedures took longer than anticipated and prevented any control the year SSW was discovered in Wind Lake (2017). The 2018 grant treatments on Wind Lake focused on the 50-acre area where the initial infestation was found.

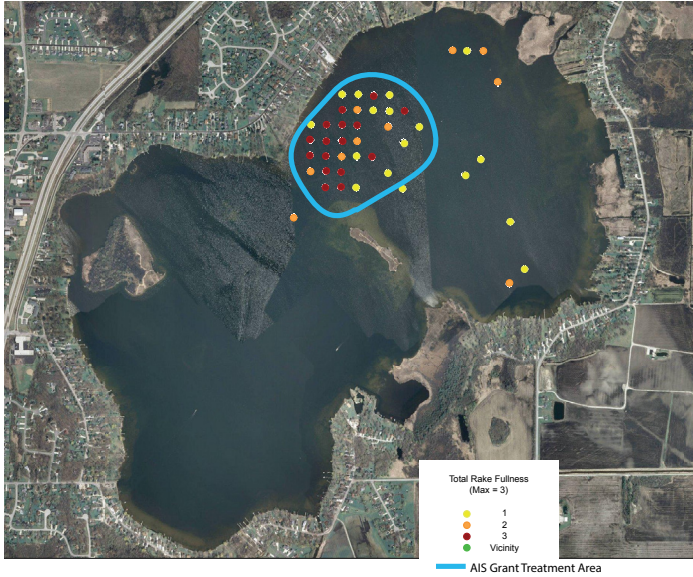


Figure 1- 2017 SSW Discovery, Grant Treatment Area

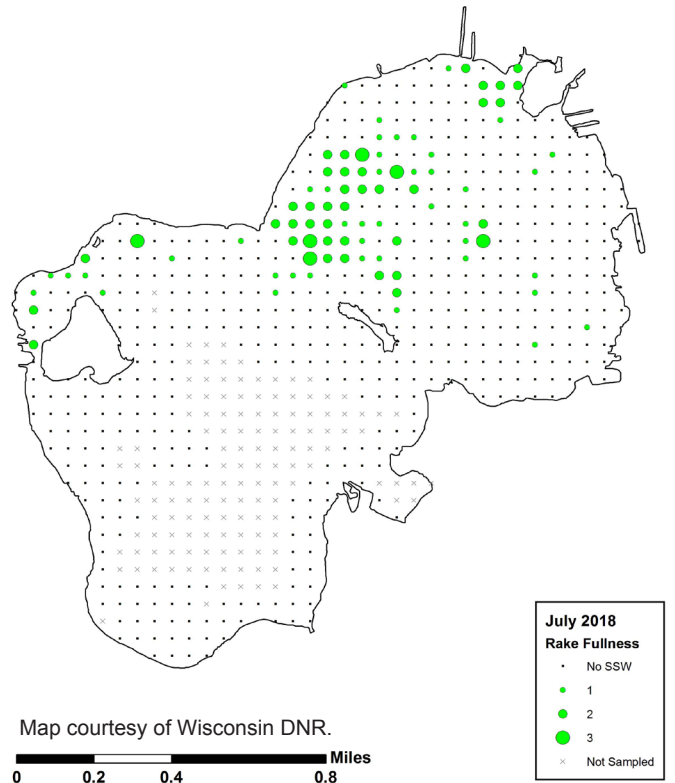


Figure 3- July 2018 Survey Results

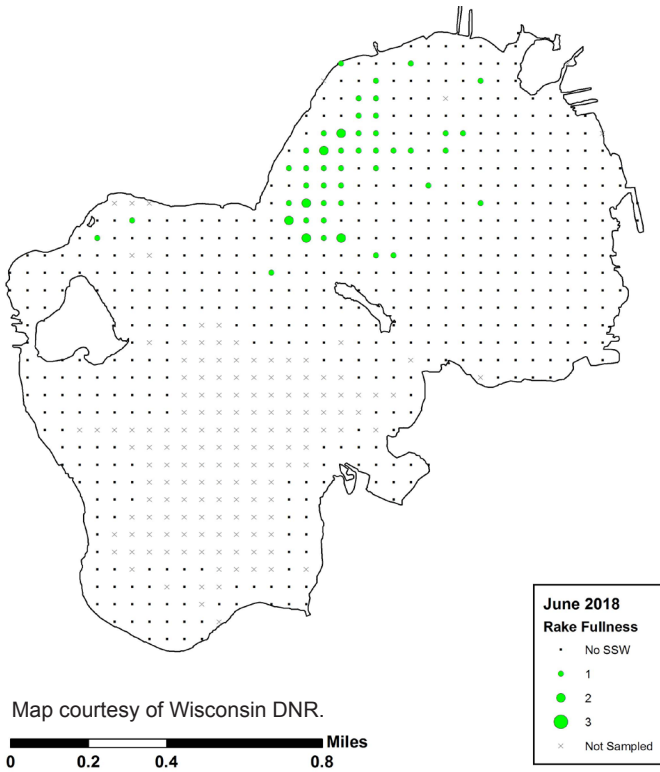


Figure 2- June 2018 Survey Results

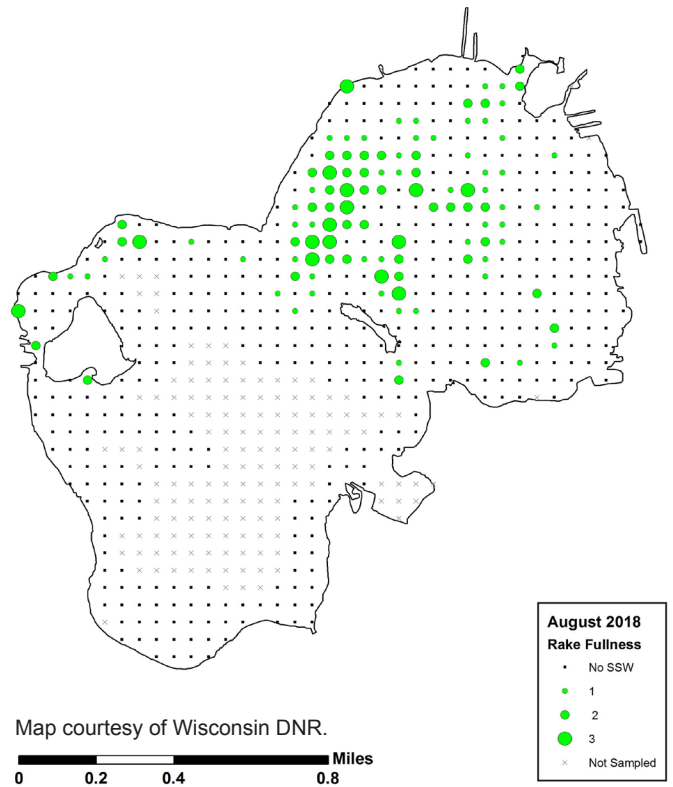


Figure 4- August 2018 Survey Results

In spite of the treatments, SSW has continued to spread in Wind Lake. When first discovered, it was at 9.5% frequency; by the end of 2018, it was at 20.4%. The best control so far, seems to be in the two navigational channels that were treated. Unfortunately, we do not expect control to extend into the second year. The challenge will be trying to maintain the navigational areas in Wind Lake and protecting the native plant community. More information will be available at the Annual Meeting September 12th.

LITTLE MUSKEGO DRAWDOWN RESULTS

There has been a lot of interest in the results of the Little Muskego winter drawdown that was done over the winter of 2017-2018. The lake was dropped approximately 7 feet to try to freeze out the SSW.

The drawdown does not appear to have worked. According to the DNR data, SSW was found in twice as many sample points in 2018 as was found in 2017 prior to the drawdown. It has increased from 1% frequency in 2015 to almost 28% in 2018.

SSW has spread around the lake, primarily in the near-shore zones. Figures 5, 6, and 7 show the results of the surveys on Little Muskego Lake from 2015 through 2018.

Little Muskego maps courtesy of Wisconsin DNR.

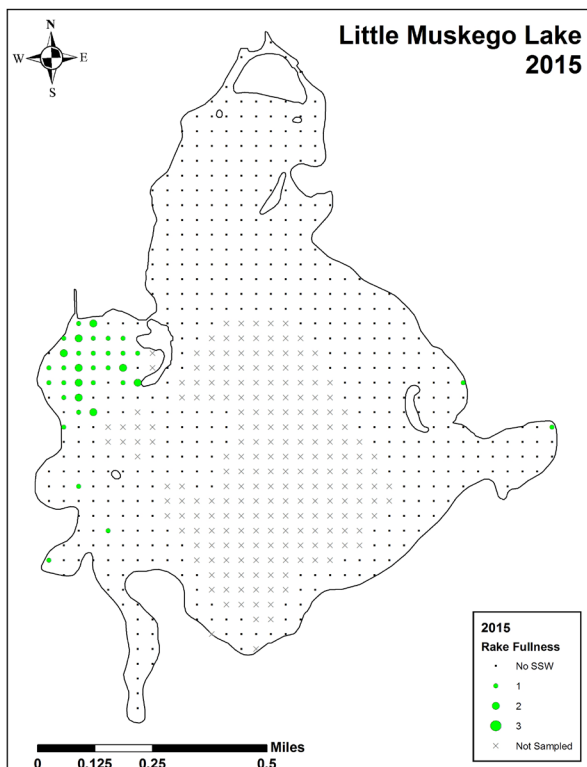


Figure 5 - SSW in Little Muskego Lake, 2015

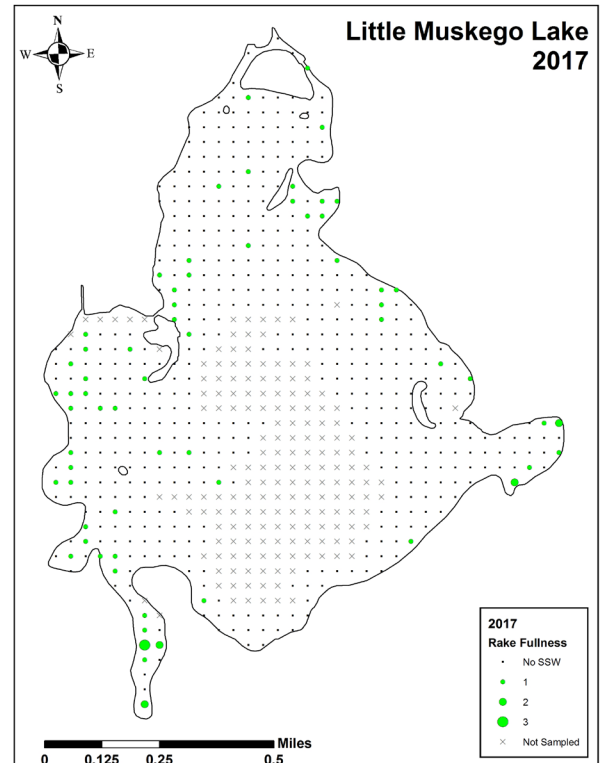


Figure 6 - SSW in Little Muskego Lake, 2017

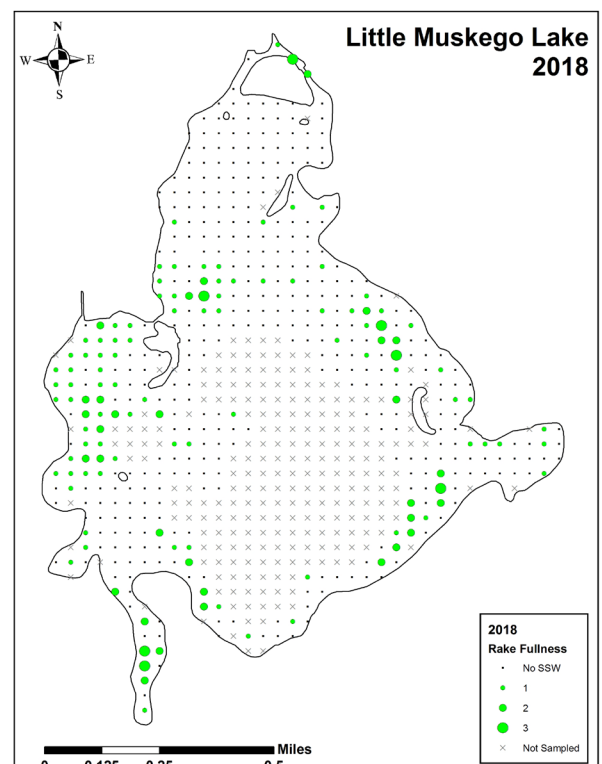


Figure 6 - SSW in Little Muskego Lake, 2018

CHEMICAL TREATMENT REJECTION FORM

If you **DO NOT** want your shoreline to be treated for aquatic plant nuisances, you must return this form as soon as possible.

I hereby request that my shoreline NOT be chemically treated. I understand that NOT treating my shoreline will NOT reduce my annual tax.

Name (PRINT) _____

Address _____

Phone _____

Lake Address (if different) _____

Tax Key Number _____

Signature (Mandatory) _____

This form must be returned ASAP!

Send to: WLMD, 30910 Royal Hill Rd., Burlington, WI 53105

GOOSE ROUNDUP APPROVAL FORM

YOU HAVE MY PERMISSION TO ENTER ONTO MY PROPERTY TO CATCH AND REMOVE GEESE.

I authorize representative from US Department of Agriculture - Wildlife Services and Wind Lake Management District to access the property listed below for the purposes of goose management. **This permission form has no expiration date and remains in effect unless you request to be removed from the approved site list.** So if you have signed up previously, you are all set. Please contact WLMD, 262-514-3238 if you wish to be removed from the list, have problems with geese on your property, or have any questions or concerns. Thank you for your assistance.

Name (PRINT) _____

Lake Address _____

Phone _____

Signature (Mandatory) _____

Please return form as soon as possible!

Send to: WLMD, 30910 Royal Hill Rd., Burlington, WI 53105

WIND LAKE WEBSITE/EMAIL

www.wlmd.org
info@wlmd.org

BOARD OF COMMISSIONERS

Lake District Line	514-3238
Mike Bluemel	895-2502
Joe Bellante	895-6694
Ron Mayer	414-614-5859
Ralph Schopp	414-531-6020
Bruce Rosenquist	895-3942

Commissioners meetings are usually held the 4th Thursday of every month, with the November and December meeting combined. Meetings begin at 7:00 pm at the Norway Town Hall. Everyone is welcome to attend. **Note that meetings may be rescheduled: check the website for the latest information.**

NEED MORE INFORMATION?

If you do, check out our website. The site has:

- Meetings, schedules, agendas, and minutes
- Information about who to contact for various activities.
- Links to other lake-related sites
- The latest lake depth map of Wind Lake
- Other special notices as needed are also posted on the site.

You can also send an email to info@wlmd.org to be put on a list to receive meeting notices and updates. If you do provide your email address to us, please be aware that your address then becomes part of our formal records. Then we have to provide them to someone making a request under the Open Records laws.

ADDRESS SERVICE REQUESTED

Wind Lake Management District
30910 Royal Hill Rd.
Burlington, WI 53105