



Volume 36, Number 2, August 2021

2021 ANNUAL MEETING & BUDGET HEARING

The annual meeting will start at 6:30pm on Tuesday, September 7th at Norway Town Hall. State law is specific as it involves lake districts and does not allow virtual annual meetings. In addition, state law does not allow the use of proxy, absentee or mail voting.

COME CELEBRATE OUR NEW WEED HARVESTER!

Before the meeting, the new weed harvester will be available for viewing in the parking lot at 5:30pm. There will be a brief ceremony at 6pm, followed immediately by a group picture of all present. This is your chance to see the harvester and trailer up close! Even with the low lake levels this summer, her inaugural year has been a huge success. Come celebrate with her crew and be a part of history!



Harvesting operations began the week of June 21st and will continue through the end of August.

INTRODUCING OUR NEW OFFICERS

A board of commissioners meeting was held following the annual 2020 WLMD meeting to elect new officers, and the results are as follows:

Mike Bluemel – Chair
Jeremy Sauld – Treasurer
Ron Mayer – Secretary
Bruce Rosenquist
Jim Marks
Joe Bellante
Ralph Schopp

SPECIAL MESSAGE FROM THE CHAIRMAN

As chairman of the Wind Lake Management District (WLMD) board, I am happy to report to you that we had a very successful first year of operation using our new weed harvester. While there have been many bumps along the way, we have worked through these bumps diligently and continue to press forward with our cutting operations. At last year's annual meeting the public voted overwhelmingly in favor of purchasing the harvester 148-19, as well as adding 2 additional members to the board. Board member Joe Bellante has worked with both the DNR and Marine Biologists to create a clear and effective weed control strategy with an enhanced focus on Starry Stonewort, Ron Mayer assumed the secretarial duties and did much of the leg work as well as gave us the steady push we needed to complete all the necessary tasks, and Jeremy Sauld took over the treasurer duties putting in countless hours to update all our databases and financial records. The entire WLMD board has pitched-in to accomplish one common goal: work to make Wind Lake a better lake.

This year has presented many unique challenges with the low lake levels and earlier-than-normal algae bloom just to name a few. That's not to mention the expected challenge of starting-up a weed cutting operation from scratch. Despite these challenges I am very proud of what we were able to accomplish in our first year. However, we are very aware that much more is needed in-order-to make the future road smoother. We are learning and adapting as we go, always aiming to improve the efficiency of our operation as best as we can and will continue to evaluate and adjust for the best options available. I think I speak for everyone on the board when I say that all decisions are made with the best interest of the lake in mind. I want you to know that we as a board will be continually striving to put us into a financial position in which we will be able to increase our cutting frequency without raising lake fees, keeping them very low in comparison to neighboring lakes.

In closing, I am mindful of the trust that the public has put into the board and take my role very seriously. I am humbled by the many positive and encouraging statements that I have heard from many of you. I promise you that our goal will always be to make Wind Lake a better lake for you and your family to enjoy. Thank you for your trust and support.

Sincerely,



Mike Bluemel - Chair

Eligible voters are:

Anyone **in attendance** of legal voting age, who owns property or lives within the boundaries of the Wind Lake Management District.

- *Absentee or proxy or mail voting is not allowed*
- *All landowners, regardless of their primary residence can vote*
- *Anyone over 18 living in the district is eligible including renters.*
- *One must be present to vote*
- *Once voting begins, no one additional can receive a ballot*
- *If you own multiple properties, you will only have 1 vote*

Please bring an ID with your address in the district or if your ID does not show the correct address then also bring a tax or utility bill in your name to show your eligibility for voting.

2021 ANNUAL MEETING & BUDGET HEARING AGENDA

Tuesday, September 7th, 2021 – 6:30pm at Norway Town Hall

Call to Order - Pledge of Allegiance

Introductions - Board Members & Guests

Approve Minutes of 2020 Annual Meeting

Annual Meeting Project Update – Review of 2021 & Plans for 2022

Billing Adjustments Discussion

Budget Hearing and Approval - Resolution 1-2021:

- *Whereas the Board of Commissioners proposed the enclosed budget for WLMD for the year Jan 1, 2022, through Dec 31, 2022:*
- *And whereas notice of Budget Hearing and Annual Meeting was provided to residents and Landowners:*
- *And whereas the Board has proposed the annual charge be set; \$220 lakefront, \$130 canal and \$90 off lake properties:*
- *And whereas the Board has recommended that all taxable properties in the district be charged according to those categories, including situations where one owner has multiple properties:*
- *And whereas the Board recommends the projects presented herein:*
- *And whereas the 1997 annual meeting gave the Board authority for short-term borrowing only to cover grant reimbursements not yet received:*
- *And whereas the 2010 Annual Meeting approved the levy of irrevocable taxes to repay state loans:*
- *Be it further resolved that the projects included in the budget, as may be amended by this annual meeting are hereby approved:*
- *Be it further resolved that the 2022 Proposed Budget is hereby approved:*
- *Be it further resolved that the 2022 Annual Meeting can be scheduled after September 8th:*
- *Be it further resolved that the annual WLMD charges will be placed on the 2021 tax bill with no penalties:*
- *Be it further resolved that the WLMD Board is authorized to apply for available grants:*
- *Be it further resolved that the authorization for short-term borrowing to cover grant reimbursements not yet received is continued through this budget year:*

Election of Commissioner – Current board member Ron Mayer's term is up for re-election. Nominations from the floor are welcome.

Discuss/Set Date & Location for 2022 Annual Meeting

New Business – Any other business that may properly come before this board

Adjourn

Note: A Board of Commissioners meeting will be held immediately following the Annual Meeting to elect officers. The next regular Board meeting is scheduled for October 25, 2021, at 7pm, at Norway Town Hall.

**Wind Lake Management District
2022 Proposed Budget**

<u>Annual Revenue</u>	
Lake Dues	\$130,000.00
Property Transfer Fees	\$120.00
Interest	\$100.00
Total Estimated Income	\$130,220.00

Expense Category	January 1, 2021 to December 31, 2021	January 1, 2021 to Current(7/26/2021)	Jan 1, 2022 to Dec 31, 2022
	Approved	Actual	Proposed
Meetings/Seminars	\$1,500.00	\$40.68	\$1,500.00
Postal Expenses	\$1,600.00	\$381.21	\$1,600.00
Office Supplies/Equipment	\$550.00	\$0.00	\$500.00
Phone/Faxes	\$800.00	\$0.00	\$0.00
Publications	\$500.00	\$0.00	\$500.00
Insurance	\$2,000.00	\$1,751.00	\$4,000.00
Print/Publishing	\$1,600.00	\$453.41	\$1,600.00
Mileage/Per Diem	\$4,800.00	\$3,099.50	\$6,400.00
Misc	\$400.00	\$0.00	\$400.00
Website	\$1,200.00	\$1,074.35	\$1,800.00
Secy/Tech Support/DP	\$9,600.00	\$0.00	\$0.00
Attorney/ consultant	\$1,000.00	\$0.00	\$4,000.00
Accountant	\$550.00	\$0.00	\$2,200.00
Weed Control/Harvest/Pickup	\$97,550.00	\$21,389.71	\$83,860.00
USGS	\$12,000.00	\$0.00	\$12,000.00
Geese Control	\$3,000.00	\$0.00	\$4,000.00
Property Maintenance	\$2,400.00	\$3,034.64	\$2,400.00
Contingency	\$1,000.00	\$1,014.39	\$1,000.00
Emergency Action	\$4,000.00	\$0.00	\$4,000.00
Alum Treatment	\$35,036.00	\$36,350.09	\$0.00
Dam Operation	\$6,000.00	\$6,000.00	\$6,000.00
Aquatic Plant Survey/Plan (Harvesting Permit)	\$0.00	\$0.00	\$13,000.00
Total Expenses	\$187,086.00	\$74,588.98	\$150,760.00

BILLING ADJUSTMENTS

As most know, last year the WLMD transitioned to a calendar year budget and eliminated early billing, with all lake dues added to property tax bills. As part of that transition, a few discrepancies were found while comparing the WLMD property database against the Racine County property tax database. The discrepancies compelled Board members to complete an audit of all the properties in the district. While some discrepancies were easily corrected, there were other issues that could not be addressed without further action.

Apparently, there has been some discrepancy whether or not the owner of multiple properties would be billed for only one property. The current board felt it was necessary to clarify this 35 year old resolution. It was determined that the only way to properly resolve this issue was to vote on it at the 2021 annual meeting.

After discussion on what is fair and consistent for all district property owners, the board voted unanimously to include the following point in Resolution 1-2021:

And whereas the Board has recommended that all taxable properties in the district be charged according to those categories, including situations where one owner has multiple properties:

The categories remain the same, specifically Lakefront \$220, Canal \$130, and Off-Lake properties \$90. The board recommends the rates also remain the same; the main difference is that all taxable properties in the district will now be charged if the resolution is passed as presented.

HARVESTER ACQUISITION UPDATE

At the 2020 annual Wind Lake Management District (WLMD) meeting the public overwhelmingly voted yes to approve the purchase of a weed harvester and starting our own weed harvesting program.

The Wind Lake Management District Weed Harvesting Program was officially started this year in the summer of 2021. So far feedback from the community has been primarily positive as the community continues to show support for this new program.

Below is a summary of the costs associated with purchasing the necessary equipment as well as details on the DNR grant that the WLMD received to help make starting this program possible.

The DNR grant WLMD was approved for covered up to 35% of the purchase price of equipment.

Purchase Price of Weed Harvesting Equipment: \$189,503.96

DNR Grant Funds (Received): \$41,251.88

DNR Grant Funds (Pending): \$25,074.51

WLMD Funds Utilized: \$123,177.57

BOARD SELECTS FIRST HARVESTING PROGRAM MANAGER

The WLMD Board is pleased to announce the selection of John Landry as our first Harvesting Program Manager. In addition to maintaining and operating the harvester, John will also schedule other operators and coordinate with the trucking firm to haul the weeds to a dump site. John has lived on Wind Lake for over 20 years and he is passionate about this program. His background and experience will help make this program a success. Congrats John!

WEED HARVESTING IS UNDERWAY

The inaugural year of Wind Lake harvesting operations is underway. The harvester has been purchased, the right people have been hired, and the training has been completed. Harvesting operations started the week of June 21st and will continue through to Labor Day weekend. Harvesting Program Manager John Landry and Operator Mike Strzok will be splitting time operating the harvester. The plan is to harvest two or three days a week, depending on weather conditions and weed growth. The district must follow the approved harvesting plan and DNR regulations. With lake levels currently low, accessing some areas may also be difficult. Please be patient as our harvesting team works to improve the conditions on Wind Lake.

The weed harvester is currently moored at the district lot next to the public launch. While we encourage district shareholders to drive past and take a look, we request that people stay off the harvester. There are many sharp/hazardous objects on the harvester that could cause serious injury. The harvester and trailer were built by Inland Lake Harvesters located in Burlington. A State grant covered 35% of the purchase cost with the balance paid for from district lake dues. If you have any questions or concerns, please email the district at info@wlmd.org.

HARVESTING STRATEGY

This year's extremely low lake levels have made harvesting weeds very challenging as it has restricted areas of the lake that are normally navigable.

We have taken many factors into consideration when crafting our weed control strategy:

- There is no pre-emergent aquatic herbicide so we cannot spray areas to prevent the growth of plants.
- We cannot harvest areas if the plants are 2-3 feet below the surface, so harvesting can only happen when the weeds reach the surface.
- We are limited by what the DNR permit allows. Water depth must be over 3' and we must leave 1' of plant growth on the lakebed. No cutting into the lakebed is allowed.
- Native plants need to protect the lakebed from the expansion of invasive species.
- Violation of the permit rules can lead to warnings, fines, and the rescinding of our harvesting permit.

HOMEOWNER ACTION

The DNR allows all homeowners the ability to clear an area 30' wide in their lake frontage as far out as they chose to a depth of 4'. This can be done by the manual method of raking to provide plant removal and the owner can remove both invasive and native plants in the 30' area. The raked vegetation can be placed by the roadside for pickup.

ROADSIDE PICKUP

The WLMD will continue the roadside weed pickup program this summer. Lake weeds can be placed on the roadside for pickup **only**. Please make sure the pile is close to the side of the road and not setting back up against a building or tree line. We will not be picking up "ice-off" debris. Do not put lake sediment, dirt, rocks, branches, garbage, or other debris in the pile. The pile WILL NOT be picked up if anything other than weeds are on the pile. Piles must be out by noon on Mondays to be picked up between Monday and Wednesday evening.

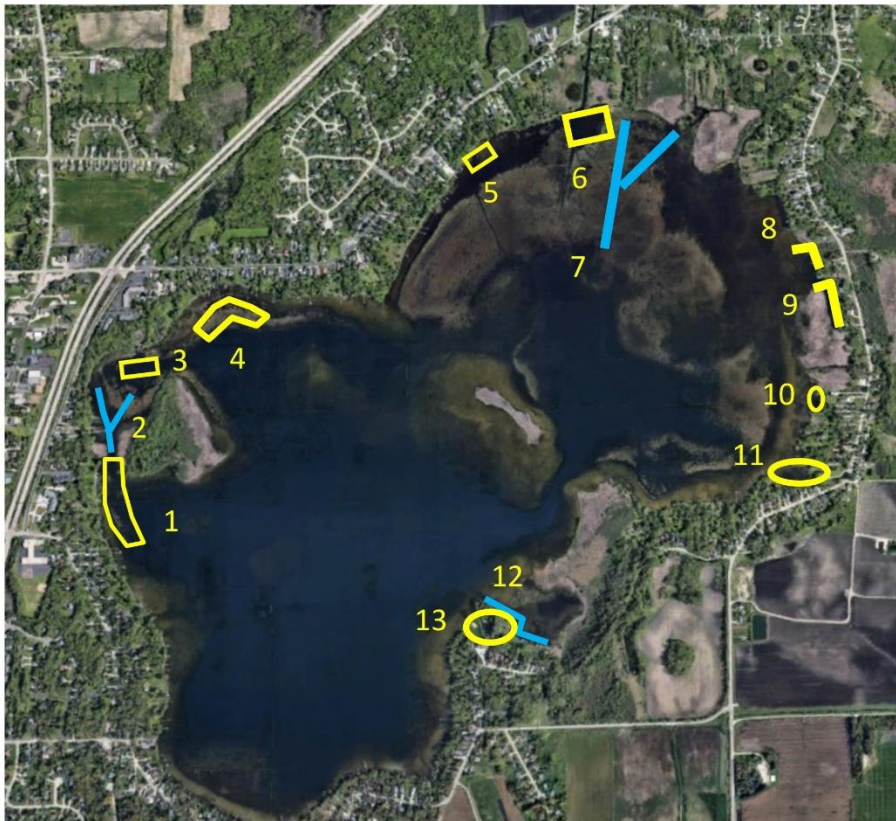
Here are the remaining dates for 2021: **Aug. 17th, 31st; Sept. 14th, 21st, 28th; & Oct. 12th, 26th.**

CHEMICAL TREATMENTS

We have applied Starry Stonewort treatments in the navigational channel and applied larger chemical treatments in other parts of the lake for invasive growth. All treatments are done under the supervision of the DNR. We concentrate most of our treatments on navigational areas. Treatments can only be conducted when either invasive species are present or when nuisance conditions block lake use. The map below shows the areas of chemical treatments that have been made.

WIND LAKE – RACINE COUNTY, WI

May 14th, 2021 Survey & Treatment Plan Proposed for May 27th, 2021



Area	Acres	CLP	EWM	Navigation
1	3.5	X	X	
2	2.0			X
3	0.75	X	X	
4	2.5	X	X	
5	0.3			X
6	2.0	X	X	
7	1.5	X	X	
8	0.50	X	X	
9	1.0	X	X	
10	0.5	X	X	
11	1.00			X
12	1.00			X
13	1.00	X	X	
Total	17.6			

PREVENTING THE SPREAD OF INVASIVE SPECIES

History has shown that once invasive species are present in a lake, it is pretty much impossible to completely eradicate it. Prevention is the key! Here are some steps that are recommended:

- Do not move your boat and fishing equipment from lake to lake without thoroughly decontaminating it.
- Remove all plant fragments from your boat, trailer, anchor ropes, live wells, etc.
- Dump all your bilge water before leaving a lake.
- Do not transport fish in water. Dump all water and put your fish on ice.
- Flush your motor cooling system between lakes
- Keep your boat and equipment dry docked for a week after using a lake will help prevent the spread of invasives.
- Try to avoid launching into a lake with a "dirty" boat launch, one that has lots of weed fragments floating around.
- Check out the Wisconsin DNR website for more information on clean boats.

GOOD V.S. BAD, NATIVE V.S. INVASIVE

Wind Lake has experienced many problems over the years, from water quality problems to Eurasian watermilfoil, from too-high water to too-low water. Each year seems to present a new challenge.

Since August 2017, the newest, and most significant challenge for Wind Lake is the highly invasive, Starry Stonewort (SSW).

SSW complicates everything we do.

Back in the 80's the water quality on Wind Lake was so poor that the main problem was pea-soup, smelly algae blooms. There were very few native plants, and most of the plants in the lake were curly-leaf pondweed and milfoil, both invasive species.

As work began to clean up the water quality, clear water led to more aquatic plants (weeds). Milfoil seemed the happiest with the new conditions, growing thick and dense, blocking boat traffic, and choking large areas of the lake. A couple of years, over 200 acres were blocked by milfoil growing to the surface on the east and NE side of the lake. To make matters worse, filamentous algae, that slimy surface algae, covered the milfoil on the surface, clogging water intakes on boats.

The District responded by harvesting channels through the milfoil so lake users could access the open water areas. Shoreline areas of milfoil were chemically treated to try to reduce the access problems.

Once the water quality and runoff problems were addressed, the native plants started to rebound. In 2011, 23 different plant species were present in Wind Lake. In 2017, the number increased to 29 species. Milfoil declined in that time going from 63% frequency to 20%.

Good weeds, in general, are less dense, have a thinner architecture, and often can be boated through. Native weed beds are great for the fisheries. Invasive species weed beds are generally very dense and can quickly block boat traffic. Dense, monotypic stands of invasives negatively affect the fisheries.



GOOD: Wild Celery and Pond Weeds



BAD: Starry Stonewort and Filamentous Algae

BLUE-GREEN ALGAE: A CLOSER LOOK

Wind Lake, like many Wisconsin lakes has areas and conditions that can foster the growth of algae. One of the most frequent types is filamentous algae which from time to time, can be seen along the shoreline during the summer or after episodes of storm run-off following a period of heavy rain. However, it can be found in deep waters as well. When weeds have reached the surface and the water warms up, the familiar green mats that form on top of the weeds are filamentous algae. Starry Stonewort is also an algae that not only can affect the water surface but also the water column below. While the presence of both can degrade the water quality and negatively impact the aquatic ecosystem, neither familiar algae produces toxins. The same cannot be said of *all* blue-green algae.

Unlike the name suggests, blue-green algae are actually a group of bacteria, often referred to as "pond scum." While they are frequently blue-green in color, they can express themselves as blue, green, reddish-purple, or brown. Blue-green algae generally grow in stagnant or slow-moving water. When water temperatures rise and nutrients like phosphorus or nitrogen are abundant, the blue-green algae will form scum layers or floating mats, usually between mid-June and late September.

Reason for Concern?

Only certain species of blue-green algae can produce toxins that can cause illness. Concerns associated with blue-green algae include among others, discolored water, odor, depletion of dissolved oxygen and toxin production. When a blue-green algae bloom dies off, the blue-green algae decays resulting in decreased oxygen in the water; a process that can negatively affect or even kill fish and other aquatic life. Toxins from certain blue-green algae are produced inside the cells of the blue-green algae. The chemicals are not produced all of the time and there is no easy way to tell when blue-green algae are producing them and when they are not. When the cells are broken open, the toxins may be released.

People and pets may be exposed to possible toxins through:

- Skin Contact
- Inhalation
- Ingestion

Blue-green toxins can negatively affect you and the health of your pet differently depending on the species type and the level of exposure. Pets are especially susceptible to blue-green algae. Because of their relatively small size, they can become extremely ill, and even die, after swallowing or licking their fur following contact with water containing blue-green algae.

Are Chemical Treatments Possible?

No. Chemical treatment of an area experiencing a blue-green algae bloom may kill the blue-green algae, but any toxins contained in the cells will be released at once. So while the bloom may no longer be visible, toxins may be present for some period of time following treatment. It is best to stay out of a water experiencing a bloom and wait for the bloom to dissipate on its own.

Measures You Can Take to Protect Yourself:

- Do not recreate (swim, boat, ski, fish, etc.) in water that looks like "pea soup", green or blue paint, or that has a scum layer or puffy blobs floating on the surface.
- Do not let pets swim in, or drink, waters experiencing blue-green algae blooms
- Always take a shower after coming into contact with any surface water (whether or not a blue-green algae bloom appears to be present; surface waters may contain other species of potentially harmful bacteria and viruses)

BLUE GREEN ALGAE: A CLOSER LOOK CONTINUED...

If you think you are experiencing symptoms related to exposure to blue-green algae (e.g., stomach cramps, diarrhea, vomiting, headache, fever, muscle weakness, difficulty breathing), contact your doctor or the **Poison Information Hotline (800-222-1222)** right away. If your pet displays symptoms such as seizures, vomiting, or diarrhea after contact with surface water, contact your veterinarian right away.

What You Can do to Limit Lake Nutrients:

- Maintain native vegetation along shorelines as buffer areas
- Minimize activities that result in erosion
- Reduce the amount of fertilizer used on lawns
- Use only phosphorus-free fertilizer



Blue Algae – Photo by Jeremy Sauld

GOOSE CONTROL

Due to insufficient numbers of geese, Wind Lake did not do a goose roundup this year. The decision to conduct a roundup needs to be made by June 1st of each year.

VESSEL SAFETY CHECK (VSC) REPORT

Inspections began at 9am and finished at 2pm on June 5th, and 24 vessels were inspected. 18 passed the inspection and 6 vessels failed for a variety of reasons including battery covers, lack of registration documentation, life preservers, and throw able life preservers. There were 6 refusals and no reason was given.

All in all it was a good day for VSC. VSC next year is planned for June 11th at the DNR ramp. An additional inspector will be available to do the overflow at Anchor Bar and Grille from 10am to 3Pm. If you would like your boat inspected at your home or dock please call Dan Jahn of the USCGA at 414-614-3146.

Report submitted by:
Bruce Rosenquist
WLMD Commissioner

ANNUAL FIREWORKS SHOW

The 4th Annual Wind Lake Firework Display will be held on Saturday, August 28th at dusk. The fireworks can be viewed from Sportsman's, B-Lazy Diner, Brian's Boathouse, Badlander's, as well as the public boat launch on Wind Lake. This incredible community event is funded 100% through fundraisers and generous donations from members of the community as well as many local businesses. Thank you to everyone who donated to support this year's show!

For show updates, info on upcoming fundraising events/volunteering, or if you would like to donate please follow us on the Wind Lake Fireworks Facebook Page or checkout our website at www.windlakefireworks.com. They can also be reached via phone at 414-870-6631 or email at Windlakefireworksassociation@gmail.com.

MINUTES – 2020 ANNUAL MEETING

September 19th, 2020

In order to comply with Wisconsin COVID 19 rules and regulations the WLMD commissioners chose an outdoor site in Meyer Park Town of Norway, to hold our 2020 annual meeting. This proved to be a satisfactory arrangement.

Call to Order - Pledge of Allegiance 9:05AM

Introduction of Board Members

Approval of 2019 Annual Meeting Minutes -A motion was made, seconded and approved by voice vote to dispense with the reading of minutes. Passed by majority voice vote.

Treasurer Mayer provided an insight into the two budget options for 2021 including a potential loan for the purchase of a harvester and refreshed the electors to the ½ year budget. Commissioner Bluemel updated the electors as to the work of the harvester committee.

Chairman Bellante read the Budget Hearing and Approval Resolution 1 2020:

Whereas the Board of Commissioners proposed the enclosed budget for WLMD for the year Jan. 1 2021 through Dec. 31 2021.

And whereas notice of Budget Hearing and Annual Meeting was provided to residents and Landowners:

- And whereas the board has proposed the annual special charge be set; \$220 lakefront, \$130 canal and \$90 off lake properties:*
- And whereas the board recommends the projects presented herein:*
- And whereas the 1997 annual meeting gave the Board authority for short-term borrowing only to cover grant reimbursements not yet received:*
- And whereas the 2010 Annual Meeting approved the levy of irrevocable taxes to repay state loans:*
- Be it further resolved that the projects included in the budget, as may be amended by this annual meeting are hereby approved:*
- Be it further resolved that the annual WLMD charges will be placed on the 2020 tax bill with no penalties:*
- Be it further resolved that the WLMD board is authorized to apply for available grants:*
- Be it further resolved that the authorization for short-term borrowing to cover grant reimbursements not yet received is continued through this budget year:*

A vote was held. Resolution 1-2020 which included a harvester purchase was hereby approved:
Yes 148 No 19

The board has recommended enlarging to 7 people (5 elected and 2 appointed). Several electors spoke motion made and seconded, vote Yes 138 No 16

Election of Commissioner – current board member Mike Bluemel's term is over. Nominations from the floor were welcome. Having none, Mike was reelected by voice vote.

Election of two additional commissioners, nominations were received from the floor, Jeremy Sauld and Jim Marks names were submitted. A vote was held to determine who would be a two or three year commissioner:

Jim Marks two year, Jeremy Sauld three year.

No new business brought up and a motion to adjourn and seconded was made. Meeting adjourned at 11:05AM

WIND LAKE MANAGEMENT DISTRICT

P.O. Box 222
Muskego, WI 53150

ADDRESS SERVICE REQUESTED

VISIT WLMD.ORG FOR MORE INFORMATION

- Meetings, schedules, agendas, and minutes
- Information about who to contact for various activities
- Links to other lake-related sites
- The latest lake depth map of Wind Lake
- Important Notices

BOARD OF COMMISSIONERS

Ron Mayer	414-614-5859
Joe Bellante	262-895-6694
Ralph Schopp	414-531-6020
Bruce Rosenquist	262-895-3942
Mike Bluemel	262-895-2502
Jim Marks	414-810-9526
Jeremy Sauld	262-391-7044

Commissioner's meetings are usually held the 4th Monday of every month, with the November and December meeting combined. Meetings begin at 7pm at the Norway Town Hall. All residents are welcome to attend, but please note that meeting dates are subject to change. Always refer to our website for the latest up-to-date information.

QUESTIONS?

Email us at info@wlmd.org